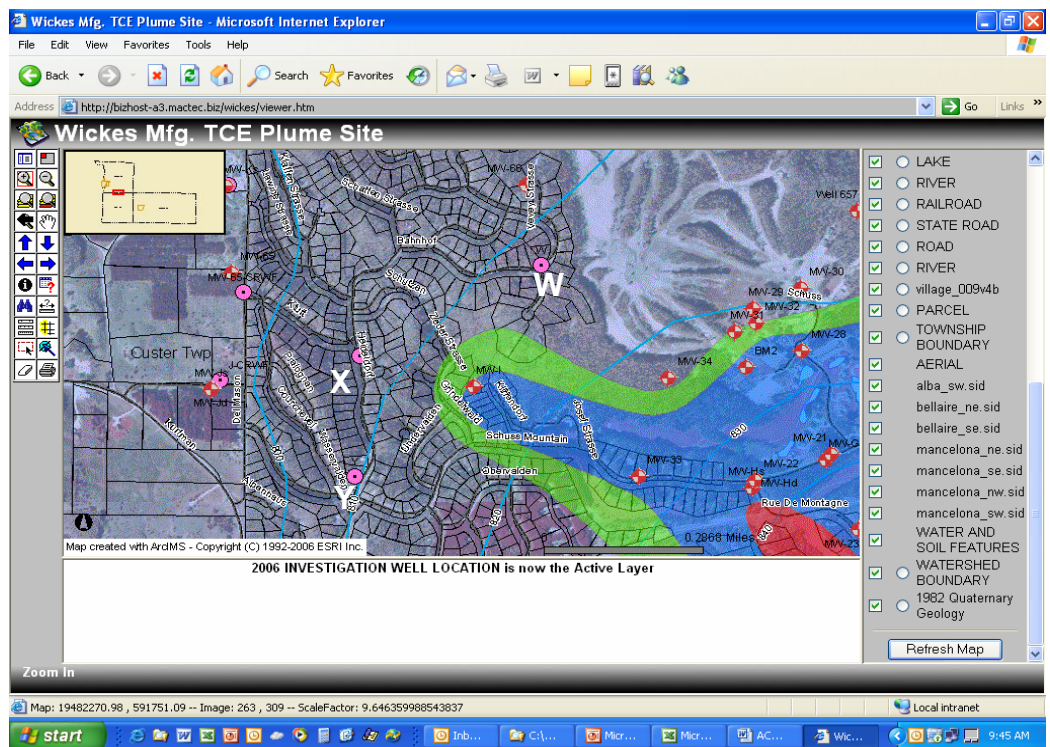
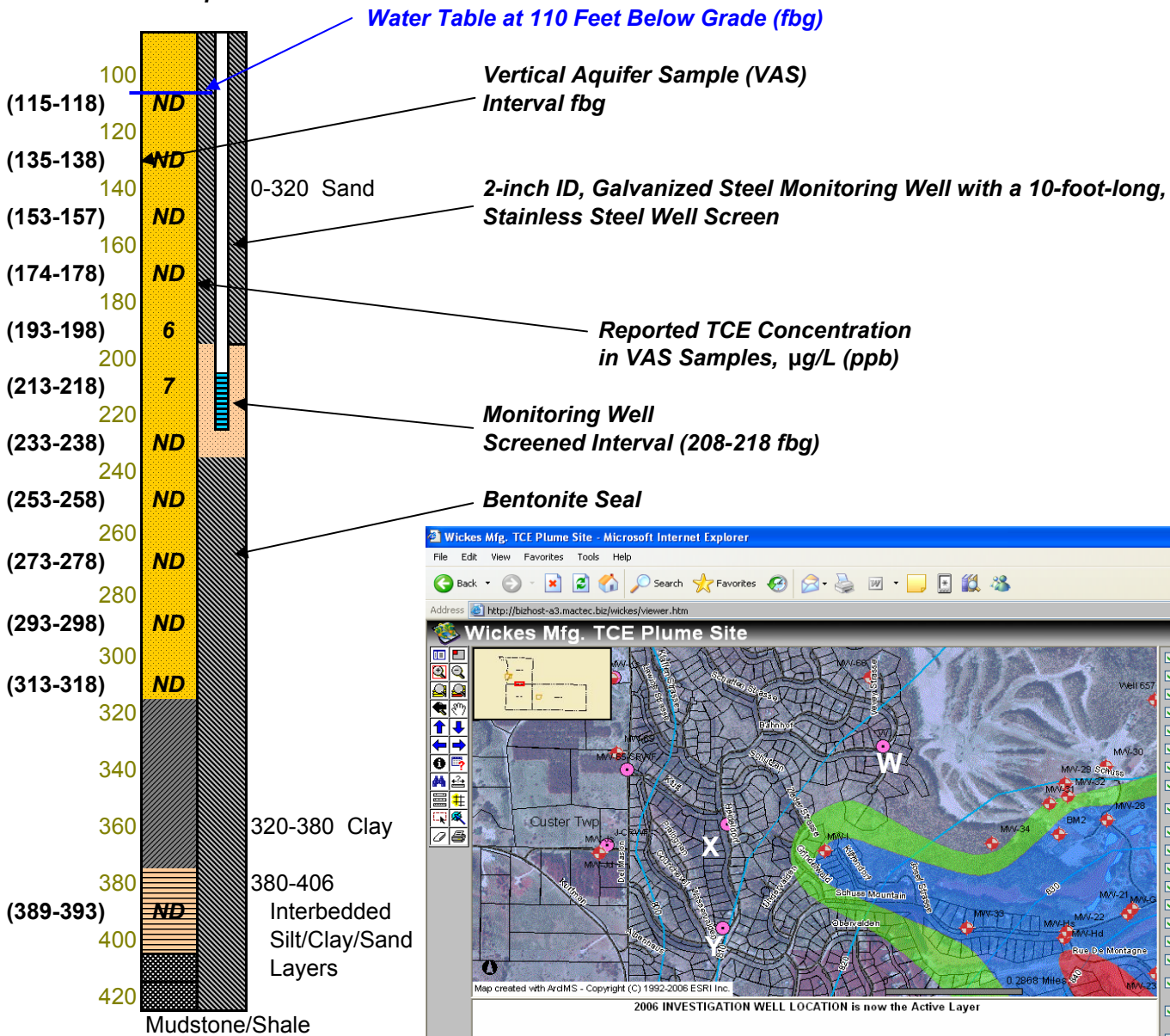


Wickes Manufacturing Site TCE Plume (Mancelona-Cedar River TCE Plume)

Preliminary Investigation Results & Monitoring Well Construction Summary

Location 'Y' - Completed 3/2/2006



<http://bizhost-a3.mactec.biz/wickes/viewer.htm>

MDEQ Web Page Links

(for Interactive Project Viewer)

(Click Links Above)

- Key Findings:**
- 1.) Detectable concentrations of TCE reported from 2 VAS sample intervals. TCE detections were reported from approximately 80 to 110 feet below the water table.
 - 2.) Significant clay confining units observed separating water bearing units.
 - 3.) VAS sampling results indicate no detectable volatile organic compounds in the deeper water bearing sands below zone of contamination.
 - 4.) This Location is outside the current water system.